

In the VILLAGE

August 2021



Escape the Heat While Supporting Local

As we head into the last weeks of Summer, there are plenty of ways to stay cool while supporting your neighborhood! Pop into one of our restaurants to savor a meal in their dining rooms or plan ahead to dine under the stars al fresco. Find solace and unwind with a movie at our local cinemas or by exploring our museums' latest offerings. As the season starts to wrap up, check out the latest releases at our local retailers.

We hope to see you in the Village soon!



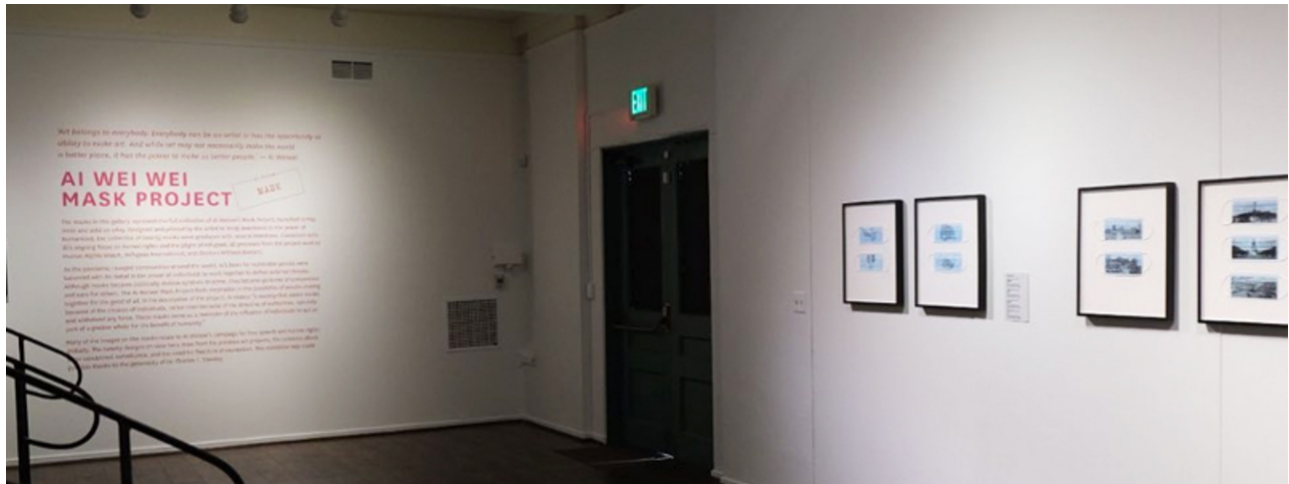
Groundbreaking for Park in Playhouse Village

On July 29, the City of Pasadena broke ground to the first park in Playhouse Village! Together with community leaders, city officials and staff, and our own Playhouse Village Association Board members, we all celebrated this long-awaited moment with gratitude and enthusiasm. Check out the video and photos from the event on our [Facebook](#).

The park under construction is located at 701 E Union St. (between El Molino and Oak Knoll Avenues) and will have open space for informal recreation, relaxation, and community gatherings; a children's playground with shade structures; a 48-space parking plaza; and a dog run. Click [here](#) to see the renderings of what to expect when the park opens in 2022.

Help Name Our Park

You are invited to help the City name our new park! Learn more about how you can submit a name for consideration at bit.ly/name-your-park. Submissions are due on Friday, August 20.



Ai Weiwei's Mask Project

Now through September 12 | USC Pacific Asia Museum

Currently on view upstairs at USC Pacific Asia Museum's Annex Gallery is Ai Weiwei's *Mask Project*. Created by Ai as a way to raise funds for COVID-19 humanitarian and human rights emergency efforts, this project has raised over \$1.4 million and sold over 22,000 artworks. Twenty silk-screened designs will be on view including "Mask with Middle Finger," "Sunflower Seeds", a surveillance camera, handcuffs, and creatures from ancient Chinese mythology.

Reserve your tickets at pacificasiamuseum.usc.edu.



The Play Pass is back at the Children's Museum

The Southern California Children's Museum is in full swing with weekly programming and activities perfect to fill in the last few weeks before the school year begins. To make multiple visits easy, the museum has brought back its Play Pass. These are transferable and never expire!

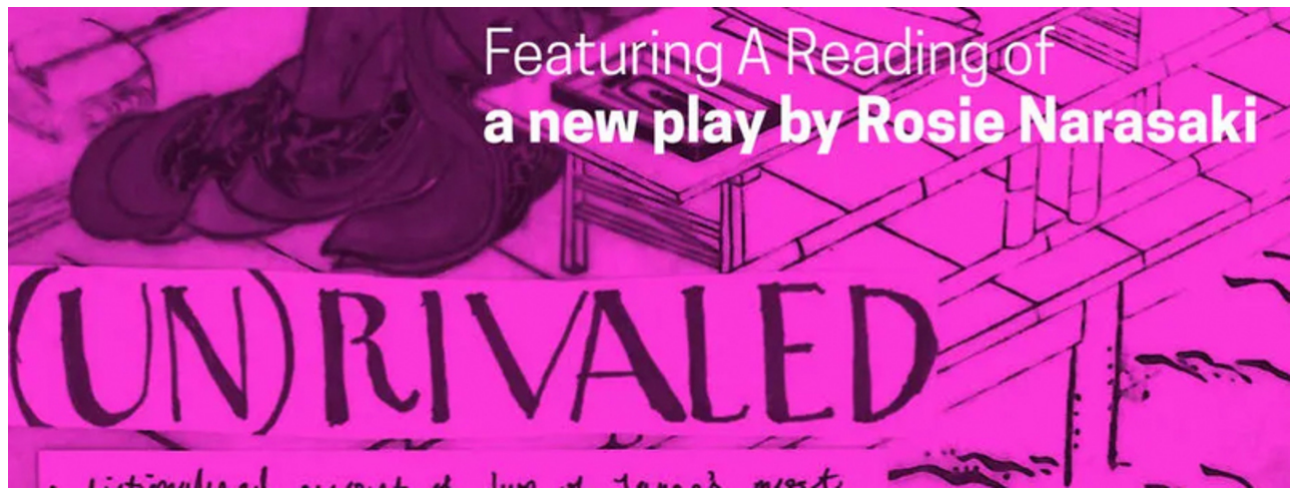
Plan your visits and buy your Play Pass at socalkids.org.



National Wellness Month

August is National Wellness Month, dedicated to promoting self-care, managing stress, and creating routines for a more healthy and positive life. Getting active is a major way to achieving this; our gyms and fitness studios can help you get started. Taking time to rest and recover is equally as important. Over at our wellness centers, you can find Zen spaces to unwind and recharge yourself.

Head over to our [directory](#) for our listing of gyms, spas, and wellness centers.



***Unrivaled* presented by Boston Court Pasadena**

Saturday, August 7 at 10:00AM

Boston Court has a passion for new play development and kicked off the first B/C Playwrights' Group in 2021. After a year of collaborative dramaturgical exploration, each play will be presented with a public virtual reading. This month, they are presenting *Unrivaled* by Rosie Narasaki which explores the friendship between two of Japan's most famous writers, Murasaki Shikibu and Sei Shonagon. *Unrivaled* is a new play about friendship, heartbreak, and what it means to be a female artist. Perhaps most of all, it's about how no matter how much things change, the more they stay the same... even after a thousand years.

RSVP for this free presentation at bostoncourtpasadena.org.



Business Resources

We know that the past year has been some of the most unpredictable and tumultuous for our businesses, cultural partners, and the overall community. We are working diligently to put together several resources from local, state, and national entities expressly designed for small businesses. The situation remains extremely fluid, but we are doing our best to compile this information. To learn more, please visit our [resource page](#).

Safety & Maintenance Committee

TBA

Streetscapes & Placemaking Committee

TBA

Promotions & Marketing Committee

Tuesday
August 10
9:30AM
via Zoom

Executive Committee

TBA

Board of Directors Meeting

Wednesday
August 25
8:30AM
via Zoom

Meetings are subject to change. If you would like to attend a meeting or for updates please contact info@playhousevillage.org.



Brian Wallace
Executive Director
brian@playhousevillage.org

Jessica Calderon
Marketing & Membership
Manager
jessica@playhousevillage.org

Christine Hewitt
Executive Assistant
christine@playhousevillage.org

Jonathan Kwok
Graphics & Communications
Specialist
Jonathan@playhousevillage.org

Playhouse Village
Ambassador Guides
626.786.1186

Playhouse Village Association | 709 E Colorado Blvd, Ste 160 | Pasadena, CA 91101
626.744.0340 | playhousevillage.org | info@playhousevillage.org