

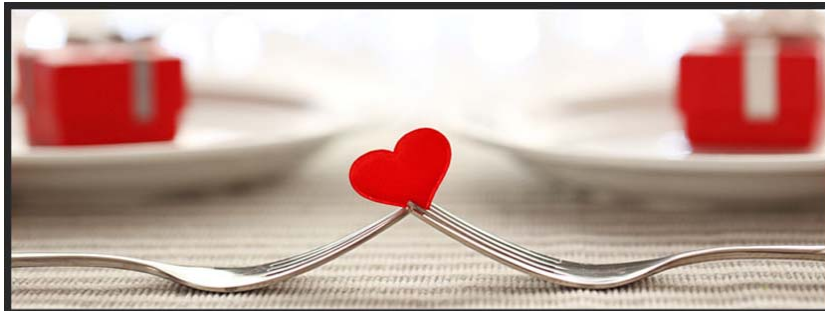
NEWSROOM

NEWS AND HAPPENINGS

PLAYHOUSE
DISTRICT

FEBRUARY 2018

UPCOMING EVENTS



Valentine's Day Dinner

Experience a night of gourmet indulgence and classic romance at our Playhouse District restaurants. From live music and cocktails to four-course menus and red roses, love is in the air at [El Portal](#), [Roy's](#), [Maison Akira](#), [The Mixx](#) and the [University Club of Pasadena](#).

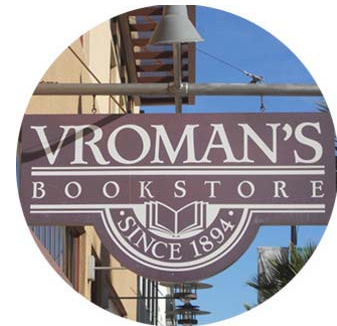
[More info »](#)



Lunar New Year at USC Pacific Asia Museum

Join [USC Pacific Asia Museum](#) on Saturday, February 17 from 11 am to 5 pm for their annual Lunar New Year festival celebrating the Year of the Dog! Enjoy performances of music, song, dance, acrobats, and martial arts demonstrations. Plus, receive free admission to the galleries, artmaking workshops and more.

[Learn More »](#)



Valentine Craft with Kelly

Saturday, February 10
11:00 am

Vroman's Bookstore

[More Info »](#)



Saturday Culinary Social

Saturday, February 3
4:00 - 7:00 pm

New School of Cooking

[More info »](#)



A Streetcar Named Desire at Boston Court

Boston Court opens the 2018 season with *A Streetcar Named Desire*, a daring new production that strips away decades of Southern gothic gauze to reveal striking themes of class, race, and gender—reinvigorating the classic which shocked audiences in its debut 70 years ago. By placing the iconic 1940s-era Blanche within an entirely contemporary and multicultural environment, this 21st century production highlights the timeless relevance of this play for our divided America.

[Full Schedule »](#)



New Exhibitions at PMCA

Three new exhibitions have made their debut at the Pasadena Museum of California Art: *Testament of the Spirit: Paintings of Eduardo Carrillo*, *The Feminine Sublime*, and *Ana Serrano: Homegrown*.

Explore the exhibitions during Free Third Thursday on February 15 from 5 pm to 9 pm. Enjoy free admission, extended hours, and a free program *Performing the Female Self*. Witness the beauty and challenges of what it means to live in the world as a woman through performances by LA-based artists. Following the performance, continue the discussion provoked by *The Feminine Sublime* exhibition with a reception courtesy of Lagunitas Brewing Company.

[Learn More »](#)



Cities: Patterns of Time Artist Reception

Saturday, February 3
6:00 pm - 9:00 pm
Walt Girdner Gallery
[More info »](#)



Midday Meditation

Every Tuesday
12:30 pm
Lyd & Mo Photography
[More Info »](#)



Ron Guthrie Reception Thursday,

February 8 4:00 pm - 6:00 pm
Galerie Gabriele
[More info »](#)



Neighborhood Nights: Monopole Wine

Hi Neighbor members are invited to our next Neighborhood Nights event at Monopole Wine on Tuesday, February 13 from 5:30 pm to 6:30 pm. Members will enjoy a free wine tasting and complimentary hors d'oeuvres while mingling with friends and neighbors.

Space is limited so please RSVP to info@playhousedistrict.org. Not a *Hi Neighbor Member* member? It's free to sign up.

[Join Hi Neighbor »](#)



Ken Jeong Comedy

Tuesday, February 13
9:30 pm

Ice House Comedy Club

[More Info»](#)

PDA Meeting Schedule

<p>Economic Enhancement Committee Thursday, February 8 at 8:30 am Pasadena Presbyterian Church</p>	<p>Promotions & Marketing Committee Tuesday, February 13 at 9:30 am Playhouse District Office</p>
<p>Parking Committee Tuesday, February 13 at 2:30 pm Playhouse District Office</p>	<p>Design & Physical Enhancement Committee Wednesday, February 21 at 8:30 am Playhouse District Office</p>
<p>Organization & Resource Committee Wednesday, February 21 at 4:00 pm Playhouse District Office</p>	<p>Board of Directors Wednesday, February 28 at 8:30 am 790 E. Colorado Blvd.</p>



PDA STAFF

626.744.0340

Brian Wallace

Executive Director
brian@playhousedistrict.org

Jessica Calderon

Marketing & Membership
Manager
jessica@playhousedistrict.org

Christine Hewitt

Executive Assistant
christine@playhousedistrict.org

PDA Ambassador Guides

626.786.1186